

CT DEEP **2016**
FISHING REPORT NUMBER 31
11/10/2016



Yellow Perch (*Perca flavescens*)



YOU CAN FIND US DIRECTLY ON FACEBOOK. This page features a variety of information on fishing, hunting, and wildlife watching in Connecticut. The address is www.facebook.com/CTFishandWildlife.



We hope that you have been able to get out and fish throughout 2016 and will continue to fish as we have great opportunities 365 days a year here in Connecticut. This will be the last regularly scheduled full-size fishing report for 2016, however, we will issue additional reports as fishing conditions warrant. Your opinions matter to us, please share any feedback, comments, or suggestions on ways to improve our fisheries, via email at deep.inland.fisheries@ct.gov

THANK YOU!

INLAND REPORT

BROODSTOCK ATLANTIC SALMON A number of catches reported from the recently stocked areas on the Naugatuck, Shetucket River, and Mount Tom Pond (with some time and effort put forth). A final round of stocking should occur in early to mid-December. Follow us on Facebook and our website to get the stocking updates.

Salmon stocking update. The Naugatuck River was stocked with 75 broodstock Atlantic salmon today (Thursday, 11/10). The upper broodstock area received 30 fish and the lower broodstock area received 45 fish. **Most fish (60) stocked today were fish weighing in the 6-20 lb range.**

Recap. Approximately 1,500 fish have been stocked earlier this fall. Mount Tom Pond and Crystal Lake (Ellington) were the lakes stocked this fall. Both the Naugatuck and Shetucket Rivers were also stocked. Additional fish will become available from the Kensington State Fish Hatchery later this fall, including more in the 6-20 lb range. ***For a summary of Atlantic salmon fishing regulations see page 3.***

LARGEMOUTH BASS fishing is reported as fair with fall turnover occurring in some waterbodies. Target suspended fish over deeper water using jigs (1 oz.). Also, the outside edges of weed lines are holding some bigger fish. Places to try include Bantam Lake, Candlewood Lake, Winchester Lake, Beach Pond, Pattagansett Lake, Crystal Lake, Mudge Pond, and Pachaug Pond.

SMALLMOUTH BASS action reported at Candlewood Lake (although it's been tough here for many lately), Lake Housatonic (upstream area), Rainbow Reservoir and Highland Lake.

See YOU next year!



Thank you for your support. All (100%) of the revenue from your investment in a fishing license comes to the Bureau of Natural Resources to support fisheries programs and fisheries conservation here in CT. The combination of money from license sales and the Federal Sport Fish Restoration Grant support habitat, stocking fish, fishing access, conservation and restoration, and educational programs. See you in 2017.

WALLEYE- Fish are biting in Squantz Pond, Batterson Park Pond, and Beach Pond. Look for deep drop offs and structure. Other places to try for Walleye are Mashapaug Lake, Gardner Lake, Mount Tom Pond, Lake Saltonstall, West Thompson Reservoir, and the Saugatuck Reservoir.

NORTHERN PIKE The fall Pike bite is steady with Pike sharpies reporting medium-sized minnows and daredevils working along the edges of receding weedlines. Places to try include Bantam Lake, Lake Lillinonah (note currently drawn down until 11/16), Mansfield Hollow Reservoir, Quaddick Reservoir, Pachaug Pond, Hopeville Pond, Winchester Lake and the Connecticut River.



BLACK CRAPPIE fishing continues to pick up, good reports for crappie from a number of areas, including Candlewood Lake, Lake Lillinonah, Rainbow Reservoir, Rogers Lake, Roseland Lake, and Park Pond.

TROUT- RIVERS & STREAMS – Temperatures are dropping, but the lack of significant rain continues to keep many streams at or near record low flow levels (see stream flow graphic on page 3).

Farmington River – Fishing continues to be good and the conditions for this weekend should be good. Flows are clear and low, currently 53 CFS at Riverton with the Still River adding 59 CFS, and water temperatures are in the low 50's °F.

Hatches/patterns fall patterns are in full swing- try the "Great Brown Autumn Sedge" especially late afternoon. Other standards include the Blue Wing Olives (#18, 22-24, mid-late afternoon), Caddis (tan #16-18, all day; brown #16-18), Midges (#20-32, morning), and Rusty Spinner (#14-20, mornings). White Woolly Buggers, Muddlers, Grey or Black Ghosts (#4-10) are standard streamers. Bottom bouncing nymphs with Caddis pupa (#14-16), Serendipity (#14-16), Prince (#6-18) and Hare's ear (#8-20) works well.

Housatonic River – Conditions for the weekend should be good. The river flows are comfortable for fishing, but a low side, currently 292 CFS at Falls Village and 341 CFS at Gaylordsville. Morning water temperatures are currently in the mid 40's °F.

Patterns to try include Blue Wing Olive (#18-22, early morning; spinner fall in evening), Midges (#20-26) and Brown/tan caddis (#14-18, early morning & evening) and large streamers. Try nymphing the pockets, deeper riffles and pool heads.

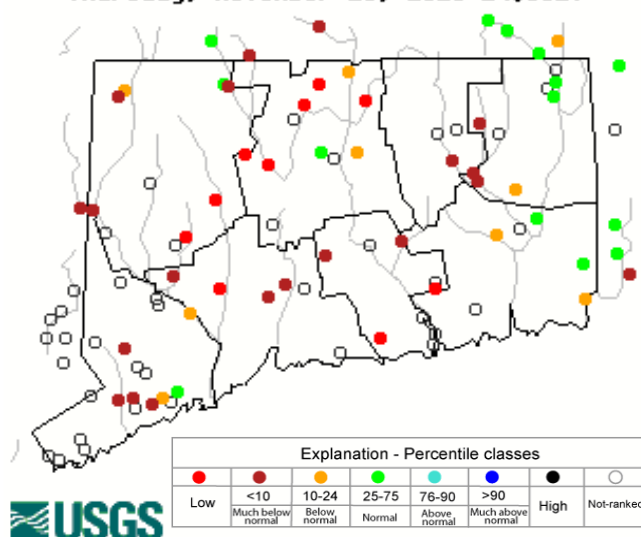
TROUT-LAKES & PONDS – Fishing for surplus broodstock Brook Trout has been reported as very good in Tyler Lake, Mohawk Pond, and Black Pond (Woodstock). Some tackle to try includes spinners, streamers, and small to medium Rapala.

CONNECTICUT RIVER

Flows have increased some but remain below typical levels (many places may still be difficult to access by boat to fish). **SMALLMOUTH BASS** have been spotty from Hartford upstream, but a number of good reports from the mainstem from Hartford down to Haddam. **LARGEMOUTH BASS** fishing has been on the slow side in the Hartford to Haddam area. **NORTHERN PIKE** are hit or miss, especially with medium shiners. **BLACK CRAPPIE** action is improving in the coves up and down the river. Target the backwaters with small shiners, silver grubs, or small Rapalas. **CARP** continue to provide good action in the coves and in the main stem (Hartford to Middletown area).

Stream flow

Thursday, November 10, 2016 14:30ET



Data in the state graphic to the left are generated by the United States Geologic Survey (USGS) and are available on line at: <http://waterdata.usgs.gov/ct/nwis/rt>. A percentile is a value on a scale of one hundred that indicates the percent of data in the data set equal to or below it. For example streamflow greater than the 75th percentile means only ¼ of the streamflow values were above the value and thus would be considered "above normal". Stream flow between the 25th and 50th are considered to be "normal flows" and those 25th or less are considered to be "below normal".

Atlantic salmon fishing regulations and areas summary

- **Regulations for Atlantic salmon on the Shetucket and Naugatuck Rivers.** In the Naugatuck, Housatonic and Shetucket Rivers, from September 1 through November 30, angling for Atlantic salmon is restricted to **catch-and-release only**. From December 1, 2016, through March 31, 2017, the daily creel limit for Atlantic salmon will be one. During the open season in the rivers, the legal method for taking Atlantic salmon is limited to angling using a single fly, or an artificial lure with a single free swinging hook and no additional weight can be added to the line above the fly or lure. Also, from October 1st through March 31st, fishing for other species in the designated Atlantic Salmon "Broodstock Areas" is restricted to the gear legal for Atlantic salmon.
- On the **Shetucket River**, anglers can fish for salmon downstream from the Scotland Dam (Windham) to the Water Street Bridge in Norwich (the first bridge upstream of Norwich Harbor). The salmon are stocked into one designated Atlantic Salmon "Broodstock Area", from the Scotland Dam to the Occum Dam.
- Anglers are allowed to fish for salmon in the **Naugatuck River** from the confluence of the East and West Branches (Torrington) downstream to the Housatonic River (Derby). Anglers may also fish for Atlantic salmon in the Housatonic River downstream of Derby Dam. The salmon are typically stocked into two designated Atlantic Salmon Broodstock Areas on the Naugatuck River, the "Campville Section" of the upper Naugatuck River from Route 118 downstream to the Thomaston Flood Control Dam (Litchfield-Thomaston) and the "Beacon Falls Section" of the lower Naugatuck, from Prospect Street (Naugatuck) downstream to Pines Bridge Road (Route 42 bridge, Beacon Falls). From October 1st through March 31st, fishing for other species in these designated Atlantic Salmon Broodstock Areas is restricted to the gear legal for Atlantic salmon.
- The regulations for Atlantic salmon released into lakes and ponds are different from the regulations for salmon on the Naugatuck and Shetucket Rivers. **In each lake, the regulations for methods, seasons and minimum lengths for salmon will be the same as for trout in that specific water body but the daily creel limit will be one salmon per day.** (Please refer to the 2016 CT Angler's Guide for trout regulations).

NOTES & NOTICES:

BASHAN LAKE (drawdown). Bashan Lake remains down approximately 4-5 feet following dam repairs completed in 2015 due to ongoing lack of sufficient precipitation (refill rate is dependent on rainfall amounts) and the state boat launch remains closed.

BRANFORD RIVER (boat launch). The Branford River state boat launch is currently closed for renovations. This closure is currently expected to last to November 14, 2016. Alternative nearby launch sites include the Guilford Town boat launch and the East River State boat launch, both in Guilford.

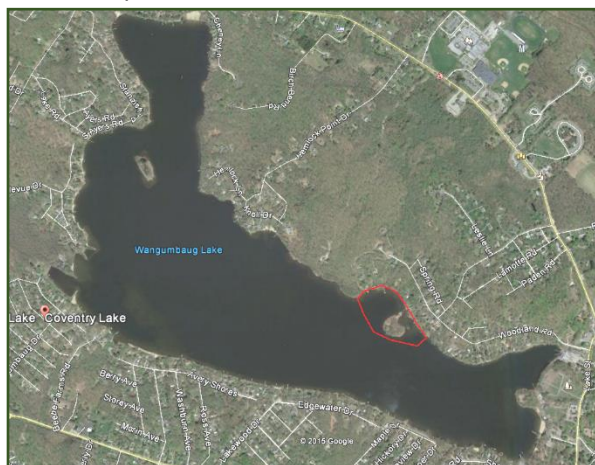
CANDLEWOOD LAKE (lake levels). Due to the drought, the lake level is down below typical late October levels and the launching of trailered boats (especially larger boats) is difficult at the Lattins Cove state launch. **The Squantz Cove state launch remains fully functional.**

COLEBROOK RIVER LAKE (boat launch). Due to low water levels the **regular boat launch at Colebrook River Lake is closed**, however, an alternate location to launch from is available and can be used. Boaters should use extra care when launching and when out on the lake (remember that submerged objects such as tree stumps and rocks are much closer to the surface due to water levels). Boaters can call the U.S. Army Corps of Engineers (USACE) at 860-379-8234 for updated information.

CONNECTICUT RIVER (invasive species alert). Hydrilla was recently found in the main stem Connecticut River in Glastonbury (near Glastonbury's riverfront Park & Boathouse). See the Coventry Lake entry below for what river users should do to prevent spread of this invasive plant to other waterbodies.

COVENTRY LAKE (invasive species alert). Hydrilla, a very highly invasive aquatic plant, has been found growing in Coventry Lake. All lake users should take extra care to check and clean their boats (including canoes, kayaks and rowing sculls), trailers, and fishing equipment before leaving the boat launch, or leaving the lakeshore.

Coventry Lake (Wangumbaug Lake) boaters should avoid the area outlined in red to avoid fragmenting and spreading hydrilla. This is only area in the lake where hydrilla has been found.



DOOLEY POND (lake levels). Due to dry conditions, the pond has not refilled yet following a drawdown to facilitate dam repairs is ongoing (repairs are done, but refill rate is dependent on rainfall). The state boat launch is currently closed.

GLASGO POND (drawdown). A drawdown of Glasgo Pond to facilitate dam repairs is ongoing (began September 2015). Launching of boats is difficult to impossible.

HANOVER POND (drawdown). A 6-foot drawdown of Hannover Pond (Quinnipiac River, Meriden) began on September 13 for the purposes of installing a small hydropower facility. The drawdown is likely to extend through the upcoming winter months. This pond has extensive shallow areas that are now exposed.

LAKE LILLINONAH is currently drawn down 5-6 feet from typical operating levels, with refill scheduled to begin late on November 16.. Launching of trailered boats from the Route 133 state boat launch will be difficult and launching from the Pond Brook boat launch is likely not possible during this drawdown.

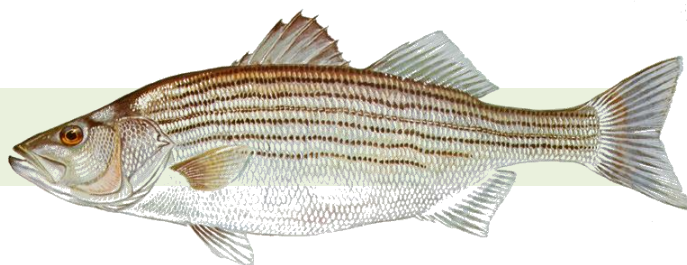
WINTER DRAWDOWNS. In western CT the drawdown of **Highland Lake** started last week. In eastern CT, drawdowns of **Middle Bolton Lake** (1.5 feet), **Lower Bolton Lake** (1.5 feet), **Gardner Lake** (3 feet),

Mashapaug Lake (1.5 feet) and **Wyassup Lake** (3 feet) have begun. A 3 foot drawdown of **Pachaug Pond** is ongoing.

FISHING SEASONS. Anglers are reminded that the fishing season at several lakes and ponds scattered throughout the state closed on Monday, October 31st, most notably **LAKE WONOSKOPOMUC**, **GREEN FALLS RESERVOIR** and **SHENIPSIT RESERVOIR**. Please refer to the 2016 CT Angler's Guide for additional locations.

Additionally, the fishing season at a number of areas including **BUNNELS POND** (Beardsley Park), **GREAT HOLLOW POND** (Wolfe Park), **LAKE MCDONOUGH**, the **MALTBY LAKES**, **LAKE SALTONSTALL**, **MOHEGAN PARK POND** (Spaulding Pond, Norwich), and **LAKE CHAMBERLAIN** will close after **November 30** and **SAUGATUCK RESERVOIR** will close after **December 31st**. *(Please refer to the 2016 CT Angler's Guide for complete regulations).*

MARINE FISHING REPORT



Surface water temperatures in Long Island Sound (LIS) are in the mid to upper 50's °F. Check out the following web sites for more detailed water temperatures and marine boating conditions:

<http://www.mysound.uconn.edu/stationstat.html>

http://marine.rutgers.edu/mrs/sat_data/?nothumbs=1

<http://www.ndbc.noaa.gov/>

<http://www.wunderground.com/MAR/AN/330.html>

NEW SHARK REGULATIONS – EFFECTIVE MONDAY, AUGUST 22, 2016: An Atlantic Highly Migratory Species (HMS) permit is required to take, possess, or land any shark species, other than smooth or spiny dogfish, in this state.

To obtain an **HMS permit** visit: <http://www.greateratlantic.fisheries.noaa.gov/aps/permits/> or call NMFS Customer Service Center at (888) 872-8862. CT Marine anglers may encounter Sand Tiger and Sandbar (Brown) Shark which are protected and prohibited species and they must be released unharmed. **IF YOU DON'T KNOW, PLEASE LET IT GO!** [Coastal shark information](#).

Connecticut State Boundary Line in Long Island Sound. Anglers please note: Though Connecticut has reciprocity with neighboring states (New York, Rhode Island, Maine and Massachusetts), residents of Connecticut are required to have a CT Resident Marine Waters Sport Fishing License to fish in the Marine District.

WHALES AND SEALS - see check [WHALE WATCHING GUIDELINES](#). All marine mammals are protected by the Federal Marine Mammal Protection Act. Following these recommended operational guidelines helps

minimize chances of harassing or injuring whales and violating Federal law. Guidelines apply to all large whales from Maine through Virginia, except North Atlantic right whales. It is illegal to approach a right whale within 500 yards (1500 feet) unless granted specific exemption or authorization.

TAUTOG (Blackfish) fishing is very good. Time to fish deeper (40-80 ft) around slack tide, especially with the full moon approaching. Rapid Rock, Race Rock, Sarah's Ledge, inner Bartlett Reef, Two Tree Island (flood tide), various smaller locations east to Watch Hill are still fishing well. You may want to try rock piles or reefs that are away from the more popular areas to increase your chances of finding a keeper sized fish. Green, Asian or Hermit Crabs will work, especially on jigs. Consider putting the crab (bait) on a chartreuse and orange jig (1.5 – 3.0 ounces in weight/depending on tide and wind). The lighter the jig the better...feel more bites. Use braid in 30-50 lb class and/or a 50 lb fluorocarbon leader (sensitivity to feel the bites is important). Also use a 4/O Gamakatsu hook (Octopus style) when using bait. I would highly recommend planning a trip on a party/charter boat trip to fish for tautog this fall.

STRIPED BASS fishing is excellent. The Housatonic River is red hot, along with the CT River up to Wethersfield Cove and the upper Thames River (north of Montville). Fish have been moving into the estuaries and tidal rivers to feed heavily on the bait. The reefs in Long Island sound are still producing fish that have begun their annual fall migration. There is still plenty of Atlantic menhaden (bunker) or hickory shad around that can be used as bait. Live bunker on a three-way or slider rig on the local reefs and rip areas can still provide some results. Other striper spots include the lower Mystic and Thames River, the Race, Sluiceway, Plum Gut, Pigeon Rip, outer Bartlett Reef, Black Point, the "humps" south of Hatchett Reef, lower Connecticut River (Dock & Dine shore fishing access), Long Sand Shoal, Cornfield Point, Southwest Reef (outer), Sixmile Reef, Falkner Island area, the reefs off Branford, New Haven Harbor (Breakwalls) and the upper reaches, Charles Island area, lower Housatonic River, buoys 18 and 20 off Stratford Point, Stratford Shoal/Middle Ground, Milford Point, Penfield Reef, around the Norwalk Islands, and Cable and Anchor Reef.

STRIPED BASS ANGLERS FISHING IN RHODE ISLAND WATERS - are advised that the state of Rhode Island has adopted the following regulations pertaining to striped bass. These regulations apply to all Rhode Island state lands and waters including the waters around Block Island: **"Any person recreationally harvesting a striped bass thirty-four (34) inches or larger shall at the time of harvest have the right pectoral fin removed at a point as close to the body of the fish as possible."**

BLUEFISH fishing is still very good. Especially inshore along the beaches (coastal state parks) and fishing piers. If you're looking for these "choppers" now's the time before it's too late. They can be found throughout the Sound (find the bait/birds). The top-water bite is fantastic. Bluefish fishing spots include the reefs off Watch Hill, the Race, Thames River, Sluiceway, Plum Gut, Pigeon Rip, lower Connecticut River, CT DEEP Headquarters, Long Sand Shoal, Sixmile Reef, Falkner Island area, New Haven Harbor and upper reaches, lower Housatonic River, buoys 18 and 20 off Stratford Point, Stratford Shoal/Middleground, Penfield Reef, Norwalk Islands and Cable and Anchor Reef.

ATLANTIC BONITO & LITTLE TUNNY fishing is amazingly very good. These tunas are getting bigger, with many topping 10 pounds or more. Niantic Bay to Watch Hill is your best bet. You can also find large schools from Millstone Point to Race Rock and the western shore of Fishers Island. Fish the current brakes and choppy water...be ready for a quick strike. Dawn and dusk is typically the best time to fish for these inshore tunas but they can be caught during the daytime. A quiet approach and finding birds (gulls/terns) actively feeding is the key to a successful trip.

BLACK SEA BASS fishing is red hot on all the major reefs and wrecks throughout Long Island Sound. Fish deep (80' -120') with 8 to 12 ozs of weight. When releasing fish suffering from "barotrauma", a buildup of

swim bladder gases, try using a recompression tool to help get them back to the bottom quickly. More information is available at FishSmart.org.

SCUP (porgy) fishing has started to slow down as fish start their migration to offshore overwintering grounds. Some scup can still be caught on the local reefs or from shore. Locate your favorite Enhanced Shore Fishing Opportunities for these hard fighting and excellent eating “Reef Slammers”.

HICKORY SHAD fishing has really picked up. Large schools can be seen on the surface feeding in lower rivers and estuaries. Your best chances are in the lower Connecticut River (DEEP Marine Headquarters fishing pier), Housatonic River, East and West River, Lieutenant River, and Black Hall River.

GOT A FISHING REPORT - PLEASE EMAIL US AT deep.marine.fisheries@ct.gov

NOTABLE CATCHES:

Species	Length (in.)	Weight (lb)	Angler
False Albacore	24"	-	Alex Erdmann
Tautog	27"	11 lbs. 2 oz.	Lou Failla
Oyster Toadfish	14"	-	Paul Hyatt
Tautog	23"	8 lbs. 2 oz.	Jerry Saville
Bluefish	34"	-	Timothy Griffith Jr.

*For **Current Connecticut Recreational Fishing Regulations**: Anglers should consult the 2016 Connecticut Anglers Guide which is now available at most Town Clerks Offices, DEEP offices and at tackle stores selling fishing licenses. Current regulations, electronic versions of the Angler's Guide and additional information can all be accessed on the DEEP website at: www.ct.gov/deep/fishing.*

The Connecticut Department of Energy and Environmental Protection is an Affirmative Action/Equal Opportunity Employer that is committed to complying with the requirements of the Americans with Disabilities Act. Please contact us at (860) 418-5910 or deep.accommodations@ct.gov if you have a disability and need a communication aid or service; have limited proficiency in English and may need information in another language; or if you wish to file an ADA or Title VI discrimination complaint.

DEEP WEEKLY Fishing Report



**Connecticut Department of
ENERGY & ENVIRONMENTAL PROTECTION**

79 Elm Street, Hartford, CT 06106

www.ct.gov/deep

Striped Bass images courtesy Duane Raver/USFWS.